

2024 MagNut Program Family Guide



Girls will have tons of fun in this year's MagNut program as they promote their own business while learning skills they'll use throughout their lifetimes. From heading outdoors with friends on an adventure to working with the community to give back, our Girl Scouts *Embrace Possibility!*

Thank you for all you do to help your Girl Scout achieve her goals and support her success in the MagNut program.

And tiptoeing up to lead the herd is this year's mascot—the Asian Elephant. (*Did you know elephants actually walk on their toes?*) We encourage your Girl Scout to learn about this endangered pachyderm.

Benefits and Ways to Participate

Not only can your Girl Scout earn fun rewards to sport on her adventures, but her troop also earns proceeds to help fund troop activities, community service projects, and awesome trips! All proceeds stay within our council and help support our mission to build girls of courage, confidence, and character.

Your Girl Scout can participate in ANY or ALL of the following options:

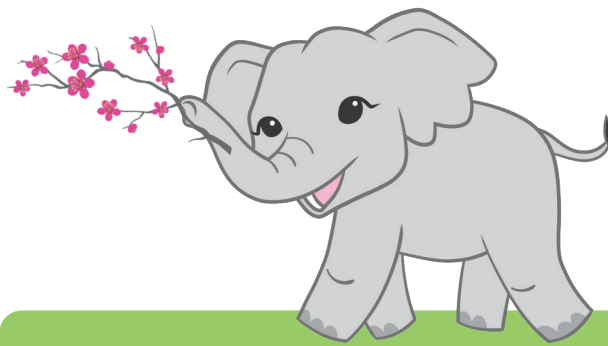
- **Online with a personalized storefront**
 - » Nut and candy items—shipped and girl-delivered* options
 - » Operation: Sweet Appreciation donations
 - » Magazines
 - » BarkBox
 - » Tervis Tumblers
 - » Personalized stationery and gifts
- **In-person with a paper order card**
 - » Nut and candy items
 - » Operation: Sweet Appreciation donations

No matter which path girls take—online, in-person, or both—they're ready to *Embrace Possibility!*

***IMPORTANT:** *If you or your Girl Scout will be unable to deliver a girl-delivery order, you must ask the customer to cancel the order **by Oct. 21**. You can encourage the customer to place a shipped order instead.*

Want more information about the MagNut program?
Visit gswpa.org/magnut.

PLEASE NOTE: The information in this guide is as up-to-date as possible at the time of printing. However, if guidelines and information change leading up to and through the program, updates will be communicated through gswpa.org and your troop leader.



2024 Key Dates:

Oct. 1

MagNut program begins.

- Order taking begins online and in-person.
- Online storefronts go live!
- Girls can send emails to family and friends.

Oct. 21

In-person nut and candy orders are due at 11:59 p.m. Last day for customers to cancel online girl-delivery orders.*

Oct. 24

Online girl-delivery orders end at 11:59 p.m.

Nov. 13-16

Nut and candy delivery. Check with your troop leader or troop MagNut manager (TMM) for details.

Dec. 1

Online shipped sales end.

Dec. 8

Reward selections are due on the M2 site by 11:59 p.m.

My Troop Info:

Troop #: _____

Troop MagNut Manager (TMM):

TMM Email:

TMM Phone: _____

M2 customer service
representatives are ready and
waiting to answer your
MagNut program questions!

question@gsnutsandmags.com
800-372-8520
We're happy to help!



girl scouts 
western pennsylvania

Getting started is easy!

- 1 Review the girl packet you received from your troop leader for product information, sales materials, and the in-person order card outlining the rewards your Girl Scout can earn.
- 2 Click on the link in the MagNut program launch email from M2* or go to gsnutsandmags.com/gswpa to participate. You'll need to know your Girl Scout's troop number before beginning.
- 3 Help your Girl Scout set up her online account and create her avatar. Her avatar can look just like her, or she can have fun with her online avatar personality. She can even record a personalized message for her avatar to deliver to family and friends.
- 4 Help your Girl Scout send emails to friends and family through her online account starting Oct. 1.
- 5 Supervise your Girl Scout while she's taking in-person nut and candy orders.

**M2 is the online site where the MagNut program is conducted.*

Entering your Girl Scout's order card in M2 is easy, too.

You must enter your Girl Scout's paper order card into the M2 system by Oct. 21 at 11:59 p.m.

- 1 Log in to gsnutsandmags.com/gswpa.
- 2 On your Girl Scout's *Dashboard*, select *Manage Paper Orders*.
- 3 Enter the total number of items for each product from your Girl Scout's PAPER order card. (Do NOT enter any online orders. Online orders are automatically added to the system.) You can update totals for each product as many times as you need until Oct. 21 at 11:59 p.m.

Contact your troop MagNut manager if you need help.

Super Sellers, *Embrace Possibility!*

Our Super Sellers are absolute goal-getters, and we love celebrating their accomplishments! To become a Super Seller, your Girl Scout must sell a total of \$1,125 or more during the MagNut program.



NEW this year. . . Super Sellers can choose to attend the Super Seller Celebration at Idlewild & SoakZone in Ligonier, PA in early summer OR \$25 in Girl Scout Bucks.

Have more than one Girl Scout in your household? Sisters can team up for more fun! If both girls sell a combined total of \$1,675 (\$550 minimum per girl), both girls will be invited to the Super Seller Celebration or receive \$25 Girl Scout Bucks. Complete the online form at gswpa.org (available in April) to let us know your Girl Scouts met the criteria.

Please Note: Transportation to/from the Super Seller Celebration event is not provided by Girl Scouts Western Pennsylvania.

Your Girl Scout can earn these two special patches featuring her name and avatar!



Fall Personalized Patch

To earn this patch:

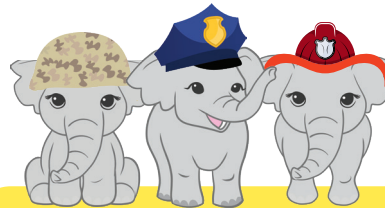
- Create an avatar and send 18 emails.
- Sell 4 magazines and 30 nut and candy items.



Personalized Cookie Crossover Patch

To earn this patch:

- Create an avatar and send 18 emails during the 2024 MagNut program.
- Sell 250 packages in the 2025 Girl Scout Cookie Program.



Promote Operation: Sweet Appreciation

In the Operation: Sweet Appreciation (OSA) donation program, girls collect donations to send MagNut treats to our U.S. military active duty and veteran service members and new this year, the program has expanded to local law enforcement and fire stations. Last year, Girl Scouts in our council sent over 4,200 treats through this program. Customers can make their \$6 Operation: Sweet Appreciation donations on your Girl Scout's paper order card and her M2 storefront. Donations to Operation: Sweet Appreciation count toward girl rewards and troop proceeds.





MagNut Program Family Guidelines and Responsibilities

Being a Girl Scout caregiver during the MagNut program comes with its own set of responsibilities. Before your Girl Scout can participate, you must sign the 2024 MagNut Program Permission Form and submit it to your troop leader.



Make it official.

Girls must be registered members of Girl Scouts to participate and should wear their membership pins or Girl Scout attire while selling.

Be safety-conscious.

Adults must accompany Girl Scouts in grades K-5 while taking orders and delivering products. Girls in grades 6-12 must be supervised by an adult and should never sell alone. Girls should not enter homes or vehicles while selling/delivering products. Follow safe pedestrian procedures.

Understand your financial role.

As a caregiver, you're financially responsible for all products ordered on your Girl Scout's order card.

- Products cannot be returned or exchanged.
- Have a plan for safeguarding money. (Avoid walking around with large amounts of cash or keeping it at home or school.)
- Payment is made to the troop, as directed by your troop leader or troop MagNut manager.
- You should obtain a receipt for all products received and payments made. You may be asked to produce these receipts in the event of a dispute.
- Customers pay for their product ordered on the paper order card **when it is delivered (not ordered)**. Money for OSA donation orders on the paper order card may be collected at the time of order.
- Girls should never take credit card numbers.
- For online payments, customers must purchase products through your Girl Scout's M2 storefront.
- Any fees incurred due to non-negotiable checks will be assessed back to the caregiver.

If your financial obligation is not fulfilled, you'll be ineligible to be appointed as a volunteer or participate in any volunteer/program/camp positions until the debt and all associated fees are paid. In addition, your Girl Scout's participation in future product programs will be limited and financial assistance won't be approved until the debt and all associated fees are paid.

Protect your Girl Scout's privacy.

Girls' last names, addresses, and email addresses should never be given to customers. Use a group contact number or address overseen by an adult for customers to request information, reorder, or give comments. Protect customer privacy by not sharing their information.

Be Internet wise. Staying safe is our priority.

Before girls start any online activities, girls should read and discuss the Internet Safety Pledge. Review the pledge at [gswpa.org](https://www.gswpa.org).



2024 MagNut Program Permission Form

Please complete this form (front and back) and return it to your troop leader or troop MagNut manager.

I give permission for my Girl Scout, _____, to participate in the MagNut program.

My Girl Scout is _____
☐ a registered member of Girl Scouts
Troop _____
☐ I've read the MagNut program family guidelines and I agree to follow them.
My Girl Scout's name is _____

This permission form is available through your troop MagNut manager or troop leader to ensure a proper and efficient flow of information. Permission forms must be sent directly to troop leaders and troop MagNut managers for their records.

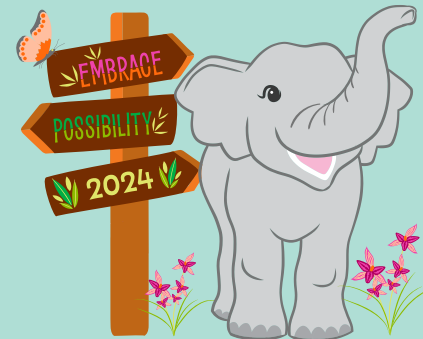
Caregiver Signature _____ Date _____

Address _____

City _____ State _____ Zip _____

Email _____

Best Phone # _____



Girls may: post their M2 link on public social media sites and ask customers to share their M2 link with friends and family.

Girls may NOT: post their M2 link on resale sites (i.e., sites that have an electronic shopping cart, online auction sites, or public sale sites such as Facebook Marketplace, eBay, and Craigslist), post content including last name or direct contact details (i.e. phone number, address, school, location, and/or email), or direct message anyone they don't personally know on social media platforms.



If my Girl Scout, _____, a member of Troop # _____ (or an Indie Girl Scout), achieves the following sales levels, she would like to receive the rewards circled below. (Rewards are cumulative.)

Date

Total Sales	Reward Options (Circle one from each shaded row.)	OR GS Bucks* Option
\$100	Embrace Possibility Patch	
\$200	Elephant Charm	
\$325	Small Plush	\$5
\$450	Tassel Key Chain and Theme Stickers	\$5
\$600	Embrace Possibility T-Shirt	\$5
\$800	Large Plush	\$5
\$1,125	Super Seller Patch and Celebration Event OR Super Seller Patch and \$25 Girl Scout Bucks	
\$1,250	Sketch Bundle	\$15
\$1,500	Craft Bundle, including Diamond Art and Pouch	\$15
\$1,750	Outdoor Mat and Mandala Beach Towel	\$20
\$2,024	American Girl Diwali Celebration Outfit OR Elephant Tracking Bracelet and \$25 Philanthropic Gift to Asian Elephant Conservation	\$25
\$2,024+	Girls earn \$10 in Girl Scout Bucks for every additional \$100 in combined sales over \$2,024.	

*Girl Scout Bucks may be used as payment for council-sponsored programs and camps, annual registration, service unit day camps, and purchases at council shops and camp trading posts.

2X!

DOUBLE the value of your Girl Scout Bucks when using them toward any council-sponsored camp found in *Camp S'more!*

2024 patch
= 18+ emails sent



Care to Share
patch = 6 donations
to OSA



Super Seller
patch = \$1,125+
in sales



Online patch
= 3+ magazines

Craft Bundle, including Diamond
Art and Pouch OR \$15 GS Bucks



Super Seller Patch & Event
OR Patch & \$25 GS Bucks



Embrace Possibility
T-Shirt
OR \$5 GS Bucks



Small Plush
OR \$5 GS Bucks



Embrace Possibility Patch

Outdoor Mat and
Mandala Beach Towel
OR \$20 GS Bucks



Sketch Bundle
OR \$15 GS Bucks



Large Plush
OR \$5 GS Bucks



Tassel Key Chain
& Theme Stickers
OR \$5 GS Bucks



Elephant Charm

Rewards not shown to scale. Council reserves the right to replace rewards with an item of equal or higher value. Style/color may vary.

